



**TC115
PFM/PWM
Evaluation Board
User's Guide**

Note the following details of the code protection feature on Microchip devices:

- Microchip products meet the specification contained in their particular Microchip Data Sheet.
- Microchip believes that its family of products is one of the most secure families of its kind on the market today, when used in the intended manner and under normal conditions.
- There are dishonest and possibly illegal methods used to breach the code protection feature. All of these methods, to our knowledge, require using the Microchip products in a manner outside the operating specifications contained in Microchip's Data Sheets. Most likely, the person doing so is engaged in theft of intellectual property.
- Microchip is willing to work with the customer who is concerned about the integrity of their code.
- Neither Microchip nor any other semiconductor manufacturer can guarantee the security of their code. Code protection does not mean that we are guaranteeing the product as "unbreakable."

Code protection is constantly evolving. We at Microchip are committed to continuously improving the code protection features of our products. Attempts to break Microchip's code protection feature may be a violation of the Digital Millennium Copyright Act. If such acts allow unauthorized access to your software or other copyrighted work, you may have a right to sue for relief under that Act.

Information contained in this publication regarding device applications and the like is provided only for your convenience and may be superseded by updates. It is your responsibility to ensure that your application meets with your specifications. MICROCHIP MAKES NO REPRESENTATIONS OR WARRANTIES OF ANY KIND WHETHER EXPRESS OR IMPLIED, WRITTEN OR ORAL, STATUTORY OR OTHERWISE, RELATED TO THE INFORMATION, INCLUDING BUT NOT LIMITED TO ITS CONDITION, QUALITY, PERFORMANCE, MERCHANTABILITY OR FITNESS FOR PURPOSE. Microchip disclaims all liability arising from this information and its use. Use of Microchip's products as critical components in life support systems is not authorized except with express written approval by Microchip. No licenses are conveyed, implicitly or otherwise, under any Microchip intellectual property rights.

Trademarks

The Microchip name and logo, the Microchip logo, Accuron, dsPIC, KEELOQ, microID, MPLAB, PIC, PICmicro, PICSTART, PRO MATE, PowerSmart, rfPIC, and SmartShunt are registered trademarks of Microchip Technology Incorporated in the U.S.A. and other countries.


AmpLab, FilterLab, Migratable Memory, MXDEV, MXLAB, PICMASTER, SEEVAL, SmartSensor and The Embedded Control Solutions Company are registered trademarks of Microchip Technology Incorporated in the U.S.A.

Analog-for-the-Digital Age, Application Maestro, dsPICDEM, dsPICDEM.net, dsPICworks, ECAN, ECONOMONITOR, FanSense, FlexROM, fuzzyLAB, In-Circuit Serial Programming, ICSP, ICEPIC, Linear Active Thermistor, MPASM, MPLIB, MPLINK, MPSIM, PICKit, PICDEM, PICDEM.net, PICLAB, PICtail, PowerCal, PowerInfo, PowerMate, PowerTool, rLAB, rfPICDEM, Select Mode, Smart Serial, SmartTel, Total Endurance and WiperLock are trademarks of Microchip Technology Incorporated in the U.S.A. and other countries.

SQTP is a service mark of Microchip Technology Incorporated in the U.S.A.

All other trademarks mentioned herein are property of their respective companies.

© 2005, Microchip Technology Incorporated, Printed in the U.S.A., All Rights Reserved.

 Printed on recycled paper.

QUALITY MANAGEMENT SYSTEM
CERTIFIED BY DNV
== ISO/TS 16949:2002 ==

Microchip received ISO/TS-16949:2002 quality system certification for its worldwide headquarters, design and wafer fabrication facilities in Chandler and Tempe, Arizona and Mountain View, California in October 2003. The Company's quality system processes and procedures are for its PICmicro® 8-bit MCUs, KEELOQ® code hopping devices, Serial EEPROMs, microperipherals, nonvolatile memory and analog products. In addition, Microchip's quality system for the design and manufacture of development systems is ISO 9001:2000 certified.



TC115 EVALUATION BOARD USER'S GUIDE

Table of Contents

Preface	1
Chapter 1. Product Overview	5
1.1 Introduction	5
1.2 What is the TC115 Evaluation Board?	5
1.3 What the TC115 Evaluation Board Kit Includes	5
Chapter 2. Installation and Operation	7
2.1 Introduction	7
2.2 Features	7
2.3 Getting Started	8
Appendix A. Schematic and Layouts	9
A.1 Introduction	9
A.2 Board Schematic	10
A.3 Board – Top Overlay	11
A.4 Board – Top Layer	12
A.5 Board – Bottom Layer	13
Appendix B. Bill Of Materials (BOM)	15
Worldwide Sales and Service	16

TC115 Evaluation Board User's Guide

NOTES:

Preface

NOTICE TO CUSTOMERS

All documentation becomes dated, and this manual is no exception. Microchip tools and documentation are constantly evolving to meet customer needs, so some actual dialogs and/or tool descriptions may differ from those in this document. Please refer to our web site (www.microchip.com) to obtain the latest documentation available.

Documents are identified with a “DS” number. This number is located on the bottom of each page, in front of the page number. The numbering convention for the DS number is “DSXXXXA”, where “XXXX” is the document number and “A” is the revision level of the document.

INTRODUCTION

This chapter contains general information that will be useful to know before using the TC115 Evaluation Board. Items discussed in this chapter include:

- Document Layout
- Conventions Used in this Guide
- Recommended Reading
- The Microchip Web Site
- Customer Support
- Document Revision History

DOCUMENT LAYOUT

This document describes how to use the TC115 Evaluation Board. The manual layout is as follows:

- **Chapter 1. “Product Overview”** – Important information about the TC115 Evaluation Board.
- **Chapter 2. “Installation and Operation”** – Includes a description of the evaluation board, as well as instructions on how to get started.
- **Appendix A. “Schematic and Layouts”** – Shows the schematic and layout diagrams for the TC115 Evaluation Board.
- **Appendix B. “Bill Of Materials (BOM)”** – Lists the parts used to build the TC115 Evaluation Board.

TC115 Evaluation Board User's Guide

CONVENTIONS USED IN THIS GUIDE

This manual uses the following documentation conventions:

DOCUMENTATION CONVENTIONS

Description	Represents	Examples
Arial font:		
Italic characters	Referenced books	<i>MPLAB[®] IDE User's Guide</i>
	Emphasized text	...is the <i>only</i> compiler...
Initial caps	A window	the Output window
	A dialog	the Settings dialog
	A menu selection	select Enable Programmer
Quotes	A field name in a window or dialog	"Save project before build"
Underlined, italic text with right angle bracket	A menu path	<u><i>File</i></u> >Save
Bold characters	A dialog button	Click OK
	A tab	Click the Power tab
Text in angle brackets < >	A key on the keyboard	Press <Enter>, <F1>
Courier New font:		
Plain Courier New	Sample source code	#define START
	Filenames	autoexec.bat
	File paths	c:\mcc18\h
	Keywords	_asm, _endasm, static
	Command-line options	-Opa+, -Opa-
	Bit values	0, 1
	Constants	0xFF, 'A'
Italic Courier New	A variable argument	<i>file.o</i> , where <i>file</i> can be any valid filename
Square brackets []	Optional arguments	mcc18 [options] <i>file</i> [options]
Curly brackets and pipe character: { }	Choice of mutually exclusive arguments; an OR selection	errorlevel {0 1}
Ellipses...	Replaces repeated text	var_name [, var_name...]
	Represents code supplied by user	void main (void) { ... }

RECOMMENDED READING

This user's guide describes how to use the TC115 Evaluation Board. The following Microchip documents are available and recommended as supplemental reference resources.

TC115 Data Sheet "PFM/PWM Step-Up DC/DC Converter" (DS21361)

This data sheet provides detailed information regarding the TC115 step-up converter.

THE MICROCHIP WEB SITE

Microchip provides online support via our web site at www.microchip.com. This web site is used as a means to make files and information easily available to customers. Accessible by using your favorite Internet browser, the web site contains the following information:

- **Product Support** – Data sheets and errata, application notes and sample programs, design resources, user's guides and hardware support documents, latest software releases and archived software
- **General Technical Support** – Frequently Asked Questions (FAQs), technical support requests, online discussion groups, Microchip consultant program member listing
- **Business of Microchip** – Product selector and ordering guides, latest Microchip press releases, listing of seminars and events, listings of Microchip sales offices, distributors and factory representatives

CUSTOMER SUPPORT

Users of Microchip products can receive assistance through several channels:

- Distributor or Representative
- Local Sales Office
- Field Application Engineer (FAE)
- Technical Support
- Development Systems Information Line

Customers should contact their distributor, representative or field application engineer (FAE) for support. Local sales offices are also available to help customers. A listing of sales offices and locations is included in the back of this document.

Technical support is available through the web site at: <http://support.microchip.com>

DOCUMENT REVISION HISTORY

Revision A (September 2005)

- Initial Release of this Document.

TC115 Evaluation Board User's Guide

NOTES:

Chapter 1. Product Overview

1.1 INTRODUCTION

The TC115 Evaluation Board is used to evaluate Microchip's TC115 in a single-cell boost converter application. As provided, the TC115 Evaluation Board generates a 3.0V output from a single-cell battery.

This chapter covers the following topics:

- What is the TC115 Evaluation Board?
- What the TC115 Evaluation Board Kit Includes

1.2 WHAT IS THE TC115 EVALUATION BOARD?

The TC115 Evaluation Board is a complete, step-up, switch-mode, dc-dc power converter. The TC115 Evaluation Board generates a regulated 3.0V output at load currents up to 110 mA. Different output voltages are obtainable by replacing the fixed 3.0V output TC115 with a fixed 3.3V or 5.0V device. Since the TC115 operates from a minimum input voltage of 0.9V, the input voltage can be provided by a single-cell battery.

The TC115 Evaluation Board is provided with an aluminum electrolytic output capacitor. However, there are ceramic and tantalum capacitor pads so other capacitor technologies can be evaluated.

Test points are provided for input power, output load and shutdown control.

1.3 WHAT THE TC115 EVALUATION BOARD KIT INCLUDES

This TC115 Evaluation Board Kit includes:

- The TC115 Evaluation Board Board (102-00074)
- TC115 Evaluation Board User's Guide (DS51578)
- TC115 Data Sheet, "*PFM/PWM Step-up DC/DC Converter*" (DS21361)

TC115 Evaluation Board User's Guide

NOTES:

Chapter 2. Installation and Operation

2.1 INTRODUCTION

The TC115 Evaluation Board demonstrates Microchip's TC115 PFM/PWM step-up dc-dc converter in a single cell battery powered application. The TC115 is a high-efficiency step-up, dc-dc converter for small, low input voltage or battery-powered systems. The device has a start-up voltage of 0.9V. Due to its integrated MOSFET feature, the TC115 may be used in conjunction with only an external diode, an inductor and a capacitor to design a complete boost converter.

The TC115 Evaluation Board is shipped with an aluminum electrolytic output capacitor. However, there are additional surface-mount pads on the board to evaluate tantalum or ceramic capacitors.

2.2 FEATURES

The TC115 Evaluation Board has the following features:

- Regulated 3.0V output voltage
- Maximum output current: 110 mA
- Automatic PFM/PWM modes of operation
- Test point to apply external Enable signal

TC115 Evaluation Board User's Guide

2.3 GETTING STARTED

The TC115 Evaluation Board is fully assembled and tested for generating a regulated 3.0V output voltage. The TC115 Evaluation Board requires the use of an external input voltage source (0.9V - 3.0V).

2.3.1 Power Input and Output Connections

2.3.1.1 POWERING THE TC115 EVALUATION BOARD

1. Apply the input voltage to the V_{IN} test point (TP1) and GND test point (TP4). The input voltage should be limited to the 0V to +3.0V range. For normal operation, the input voltage should be between +0.9V and +3.0V.

Note 1: Since the TC115 Evaluation Board is a boost converter, applying an input voltage greater than 3.0V will result in an output voltage equal to the input voltage. The TC115 Evaluation Board cannot regulate to an output voltage that is lower than the input voltage.

- 2: With the boost topology, there always exist a path from the input source to the output load.

2.3.1.2 APPLY THE LOAD TO THE REGULATED OUTPUT VOLTAGE TEST POINTS

1. To apply a load to the TC115 Evaluation Board, the positive side (+) of the load should be connected to the V_{OUT} test point (TP3). The negative side (-) of the load should be connected to the GND test point (TP2).

Note: Since the TC115 device receives bias from the output, it may be necessary to remove the load before starting the TC115 Evaluation Board.

2. The TC115 Evaluation Board is supplied with a fixed 3.0V output voltage version of the TC115. However, by changing the TC115 device, other output voltages can be achieved. Besides the fixed 3.0V version, the TC115 is also offered in a fixed 3.3V or 5.0V version.

2.3.1.3 ENABLING/DISABLING THE TC115 EVALUATION BOARD

The $\overline{\text{SHDN}}$ pin of the TC115 is pulled-up to V_{IN} to always enable the device. Test point TP5 can be used to apply an external Enable signal to the device.



TC115 EVALUATION BOARD USER'S GUIDE

Appendix A. Schematic and Layouts

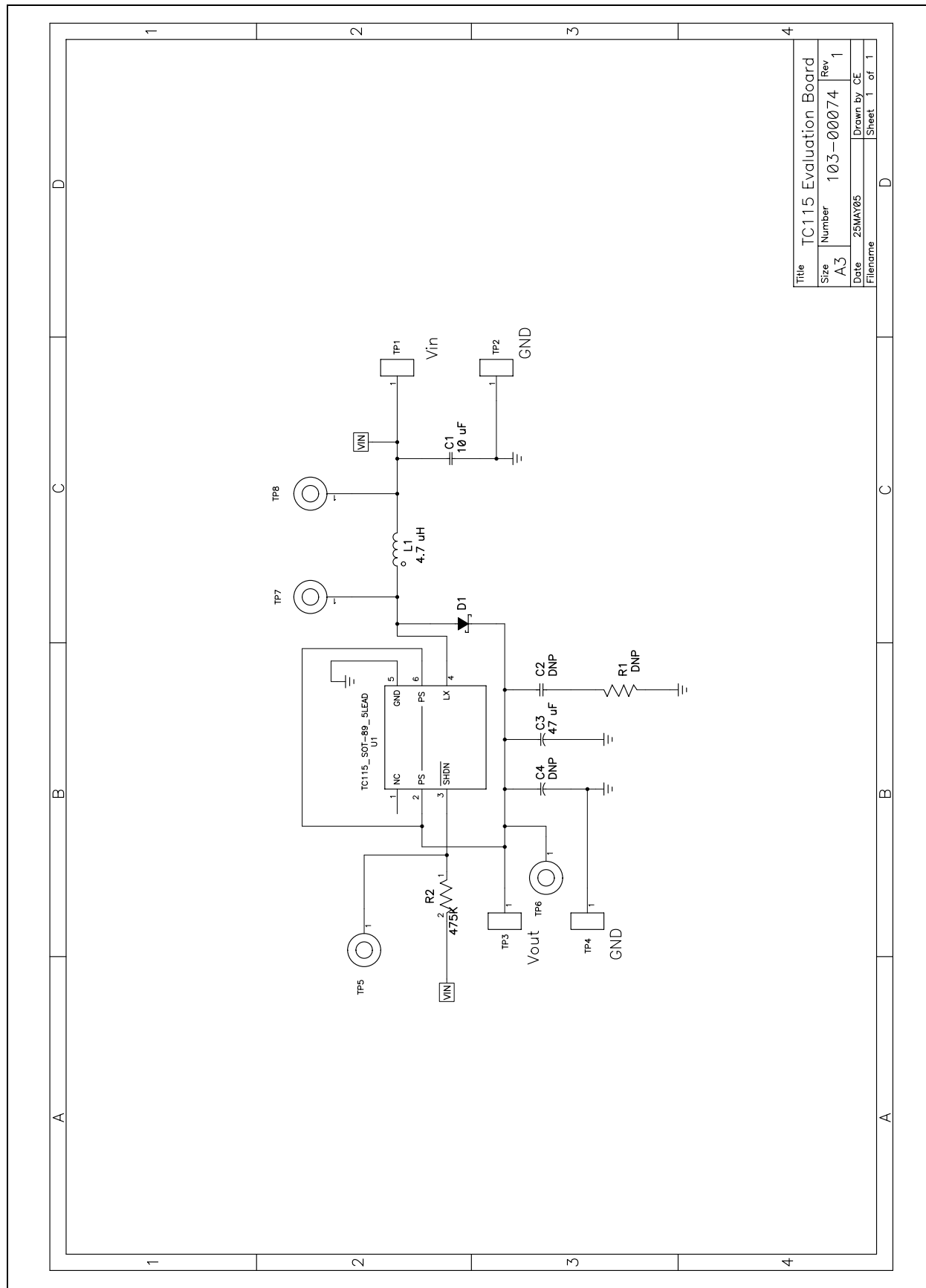
A.1 INTRODUCTION

This appendix contains the following schematic and layout diagrams for the TC115 Evaluation Board:

- Board Schematic
- Board – Top Overlay
- Board – Top Layer
- Board – Bottom Layer

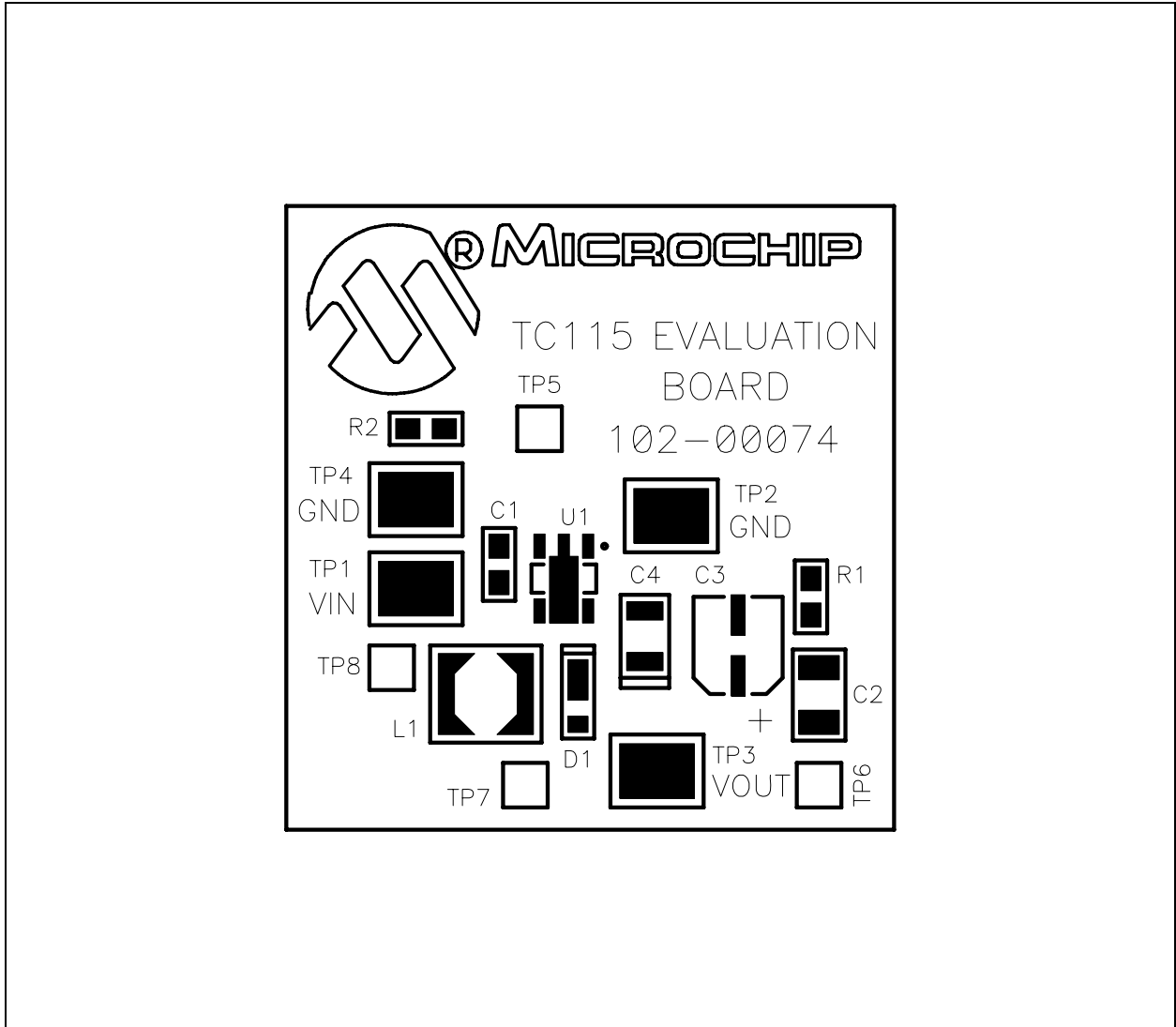
TC115 Evaluation Board User's Guide

A.2 BOARD SCHEMATIC



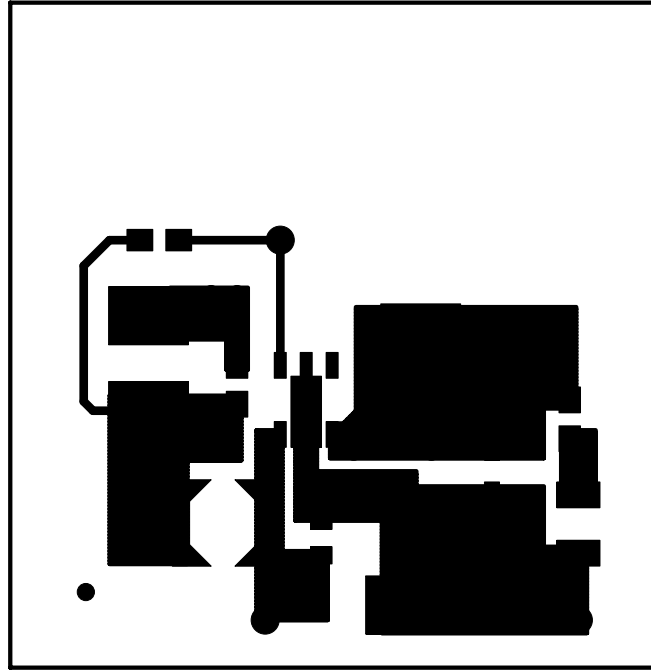
Title	TC115 Evaluation Board		
Size	Number	Rev	
A3	103-00074	1	
Date	25MAY05	Drawn by	CE
Filename		Sheet	1 of 1

A.3 BOARD – TOP OVERLAY

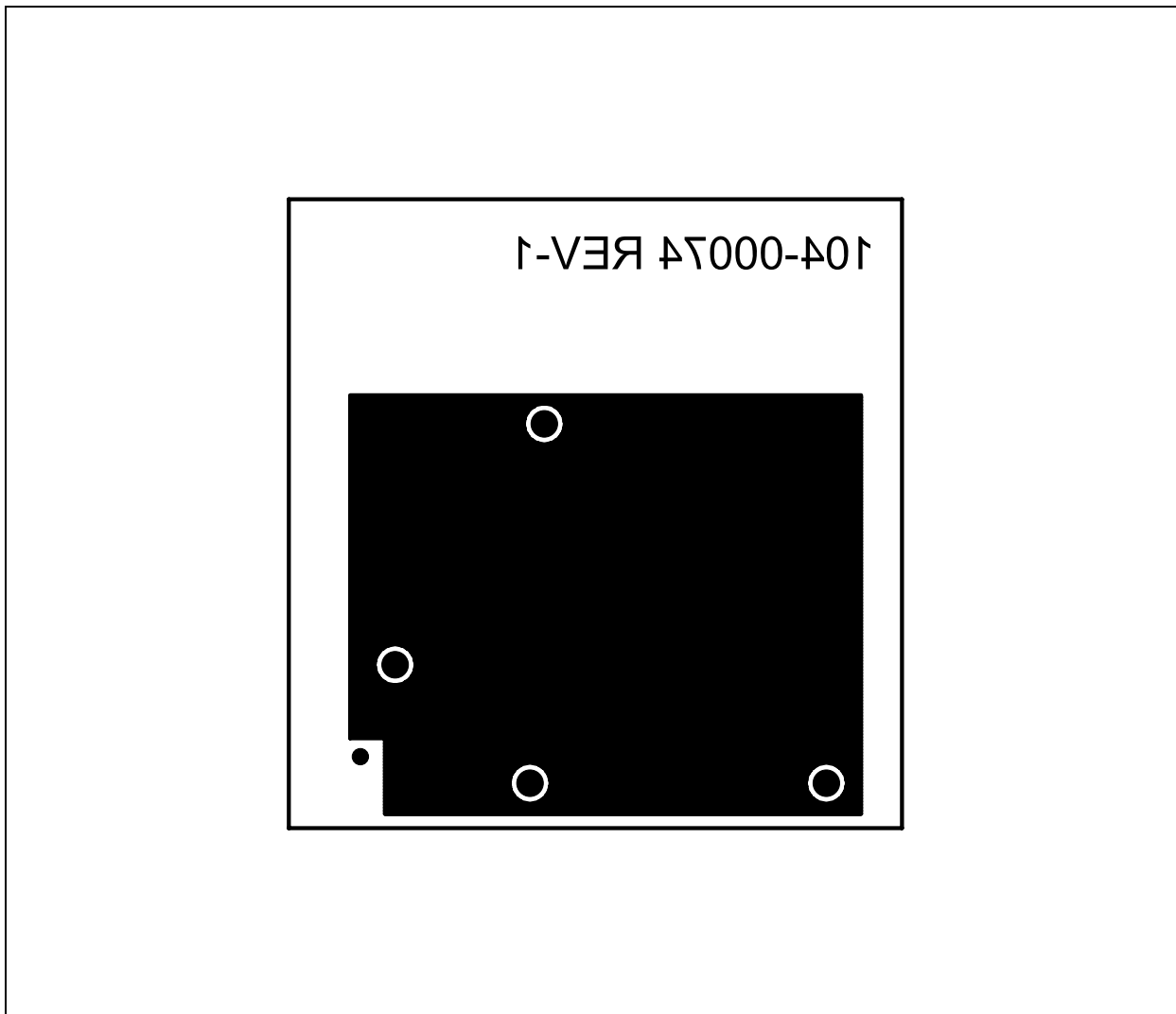


TC115 Evaluation Board User's Guide

A.4 BOARD – TOP LAYER



A.5 BOARD – BOTTOM LAYER



TC115 Evaluation Board User's Guide

NOTES:



TC115 EVALUATION BOARD USER'S GUIDE

Appendix B. Bill Of Materials (BOM)

TABLE B-1: BILL OF MATERIALS (BOM)

Qty.	Reference	Description	Mfgr.	Part Number
-	C2	Do Not Populate	-	-
1	C3	47 μ F, Electrolytic, 6.3V	Nichicon	UWT0J470MCL1GB
-	C4	Do Not Populate	-	-
1	C1	10 μ F, X5R Ceramic, 6.3V 0805	Panasonic [®]	ECJ-CV50J106M
1	D1	1A, 20V Shottky Diode	Diodes Inc.	DFLS120L
1	L1	4.7 μ H, Inductor, SD18	Coiltronics [®]	SD18-4R7
-	R1	Do Not Populate	-	-
1	R2	475K, 1/8W,1%, Chip Resistor, 0805	Rohm	MCR10EZH4753
4	TP1,TP2, TP3, TP4	Test Point	Keystone [®]	5016
1	U1	Step-up dc-dc Converter	Microchip Technology Inc.	TC115301EMTTR



WORLDWIDE SALES AND SERVICE

AMERICAS

Corporate Office

2355 West Chandler Blvd.
Chandler, AZ 85224-6199
Tel: 480-792-7200
Fax: 480-792-7277
Technical Support:
<http://support.microchip.com>
Web Address:
www.microchip.com

Atlanta

Alpharetta, GA
Tel: 770-640-0034
Fax: 770-640-0307

Boston

Westborough, MA
Tel: 774-760-0087
Fax: 774-760-0088

Chicago

Itasca, IL
Tel: 630-285-0071
Fax: 630-285-0075

Dallas

Addison, TX
Tel: 972-818-7423
Fax: 972-818-2924

Detroit

Farmington Hills, MI
Tel: 248-538-2250
Fax: 248-538-2260

Kokomo

Kokomo, IN
Tel: 765-864-8360
Fax: 765-864-8387

Los Angeles

Mission Viejo, CA
Tel: 949-462-9523
Fax: 949-462-9608

San Jose

Mountain View, CA
Tel: 650-215-1444
Fax: 650-961-0286

Toronto

Mississauga, Ontario,
Canada
Tel: 905-673-0699
Fax: 905-673-6509

ASIA/PACIFIC

Australia - Sydney

Tel: 61-2-9868-6733
Fax: 61-2-9868-6755

China - Beijing

Tel: 86-10-8528-2100
Fax: 86-10-8528-2104

China - Chengdu

Tel: 86-28-8676-6200
Fax: 86-28-8676-6599

China - Fuzhou

Tel: 86-591-8750-3506
Fax: 86-591-8750-3521

China - Hong Kong SAR

Tel: 852-2401-1200
Fax: 852-2401-3431

China - Qingdao

Tel: 86-532-8502-7355
Fax: 86-532-8502-7205

China - Shanghai

Tel: 86-21-5407-5533
Fax: 86-21-5407-5066

China - Shenyang

Tel: 86-24-2334-2829
Fax: 86-24-2334-2393

China - Shenzhen

Tel: 86-755-8203-2660
Fax: 86-755-8203-1760

China - Shunde

Tel: 86-757-2839-5507
Fax: 86-757-2839-5571

China - Wuhan

Tel: 86-27-5980-5300
Fax: 86-27-5980-5118

China - Xian

Tel: 86-29-8833-7250
Fax: 86-29-8833-7256

ASIA/PACIFIC

India - Bangalore

Tel: 91-80-2229-0061
Fax: 91-80-2229-0062

India - New Delhi

Tel: 91-11-5160-8631
Fax: 91-11-5160-8632

India - Pune

Tel: 91-20-2566-1512
Fax: 91-20-2566-1513

Japan - Yokohama

Tel: 81-45-471-6166
Fax: 81-45-471-6122

Korea - Gumi

Tel: 82-54-473-4301
Fax: 82-54-473-4302

Korea - Seoul

Tel: 82-2-554-7200
Fax: 82-2-558-5932 or
82-2-558-5934

Malaysia - Penang

Tel: 604-646-8870
Fax: 604-646-5086

Philippines - Manila

Tel: 632-634-9065
Fax: 632-634-9069

Singapore

Tel: 65-6334-8870
Fax: 65-6334-8850

Taiwan - Hsin Chu

Tel: 886-3-572-9526
Fax: 886-3-572-6459

Taiwan - Kaohsiung

Tel: 886-7-536-4818
Fax: 886-7-536-4803

Taiwan - Taipei

Tel: 886-2-2500-6610
Fax: 886-2-2508-0102

Thailand - Bangkok

Tel: 66-2-694-1351
Fax: 66-2-694-1350

EUROPE

Austria - Weis

Tel: 43-7242-2244-399
Fax: 43-7242-2244-393

Denmark - Copenhagen

Tel: 45-4450-2828
Fax: 45-4485-2829

France - Paris

Tel: 33-1-69-53-63-20
Fax: 33-1-69-30-90-79

Germany - Munich

Tel: 49-89-627-144-0
Fax: 49-89-627-144-44

Italy - Milan

Tel: 39-0331-742611
Fax: 39-0331-466781

Netherlands - Drunen

Tel: 31-416-690399
Fax: 31-416-690340

Spain - Madrid

Tel: 34-91-352-30-52
Fax: 34-91-352-11-47

UK - Wokingham

Tel: 44-118-921-5869
Fax: 44-118-921-5820



08/24/05